

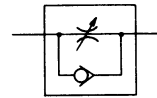
# 금속형 스피드 컨트롤러

# Series SPM시리즈



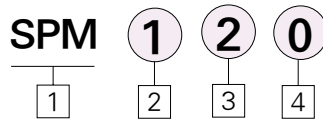
- 절감된 배관 공수와 비용
- 자유로이 설정 가능한 배관방법
- 저유량 구간에서 속도제어와 용이
- 균질의 속도제어가 가능

Symbol



악세사리 ①

## 형식표시 방법



**1 Speed Controller**  
(Threaded Elbow Type)

**2 Port Size**  
 1 : PT(R) 1/8  
 2 : PT(R) 1/4  
 3 : PT(R) 3/8  
 4 : PT(R) 1/2

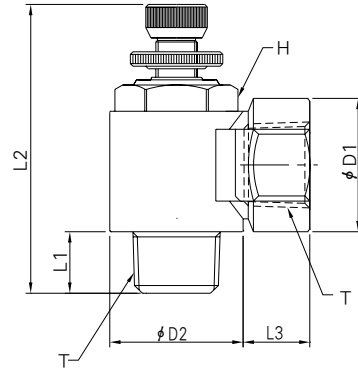
**3 Type**  
 2 : Direct connection type

**4 Controlled Method**  
 0 : Meter-Out  
 1 : Meter-In

## 사양

형식	SPM12□	SPM22□	SPM32□	SPM42□	
(관접속구경)	실린더측	PT(R) 1/8	PT(R) 1/4	PT(R) 3/8	PT(R) 1/2
	듀브측	PT(R) 1/8	PT(R) 1/4	PT(R) 3/8	PT(R) 1/2
보증내압력	10.5 kgf/cm <sup>2</sup> {1.05MPa}				
최고사용압력	7 kgf/cm <sup>2</sup> {0.7MPa}				
최저사용압력	1 kgf/cm <sup>2</sup> {0.1MPa}				
주위온도 및 사용유체온도	5~60℃				
니들회전수	8 turns				

## 치수도

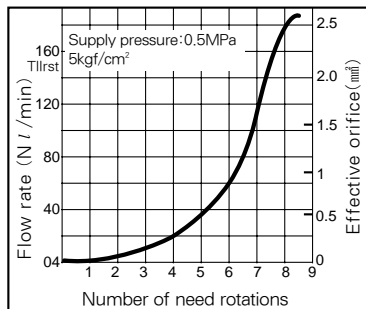


Unit: mm

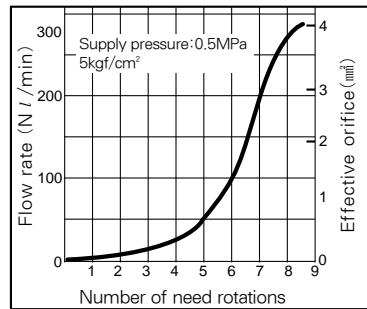
Model	T (Thread)	H	L1	L2		L3	D1	D2
				Min.	Max.			
SPM120	PT1/8	14	8	40.3	46.4	9.2	15.7	15
SPM220	PT1/4	17	12.2	45.3	49.4	12	20	20
SPM320	PT3/8	21	12.6	52.4	58.5	13	26	26
SPM420	PT1/2	24	15.5	56.3	63.9	24.2	28.6	27.5
SPM121	PT1/8	14	8	40.3	46.4	9.2	15.7	15
SPM221	PT1/4	17	12.2	45.3	49.4	12	20	20
SPM321	PT3/8	21	12.6	52.4	58.5	13	26	26
SPM421	PT1/2	24	15.5	56.3	63.9	24.2	28.6	27.5

## 니들밸브 유량특성

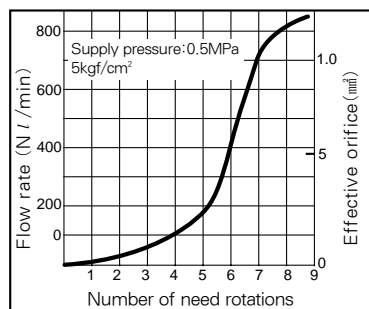
SPM12 □



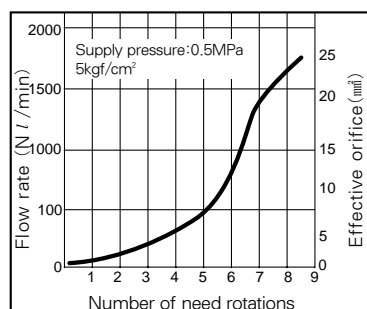
SPM22 □



SPM32 □



SPM42 □



# Metric One-touch Fittings/공압 배관용 피팅

SQH



SQL



SQT



SQY



SQU



SQW



SQV



SQF



SQE



Applicable tube material	Applicable tube O.D (mm)					With Sealant
	φ4	φ6	φ8	φ10	φ12	
Nylon Soft Nylon Polyurethane	M5	●	●	●	●	●
	1/8	●	●	●	●	●
	1/4	●	●	●	●	●
	3/8	●	●	●	●	●
	1/2	●	●	●	●	●
	No	●	●	●	●	●
Nylon Soft Nylon Polyurethane	M5	●	●	●	●	●
	1/8	●	●	●	●	●
	1/4	●	●	●	●	●
	3/8	●	●	●	●	●
	1/2	●	●	●	●	●
	No	●	●	●	●	●
Nylon Soft Nylon Polyurethane	M5	●	●	●	●	●
	1/8	●	●	●	●	●
	1/4	●	●	●	●	●
	3/8	●	●	●	●	●
	1/2	●	●	●	●	●
	No	●	●	●	●	●
Nylon Soft Nylon Polyurethane	M5	●	●	●	●	●
	1/8	●	●	●	●	●
	1/4	●	●	●	●	●
	3/8	●	●	●	●	●
	1/2	●	●	●	●	●
	No	●	●	●	●	●
Nylon Soft Nylon Polyurethane	M5	●	●	●	●	●
	1/8	●	●	●	●	●
	1/4	●	●	●	●	●
	3/8	●	●	●	●	●
	1/2	●	●	●	●	●
	No	●	●	●	●	●
Nylon Soft Nylon Polyurethane	M5	●	●	●	●	●
	1/8	●	●	●	●	●
	1/4	●	●	●	●	●
	3/8	●	●	●	●	●
	1/2	●	●	●	●	●
	No	●	●	●	●	●
Nylon Soft Nylon Polyurethane	M5	●	●	●	●	●
	1/8	●	●	●	●	●
	1/4	●	●	●	●	●
	3/8	●	●	●	●	●
	1/2	●	●	●	●	●
	No	●	●	●	●	●
Nylon Soft Nylon Polyurethane	M5	●	●	●	●	●
	1/8	●	●	●	●	●
	1/4	●	●	●	●	●
	3/8	●	●	●	●	●
	1/2	●	●	●	●	●
	No	●	●	●	●	●

와세사리®